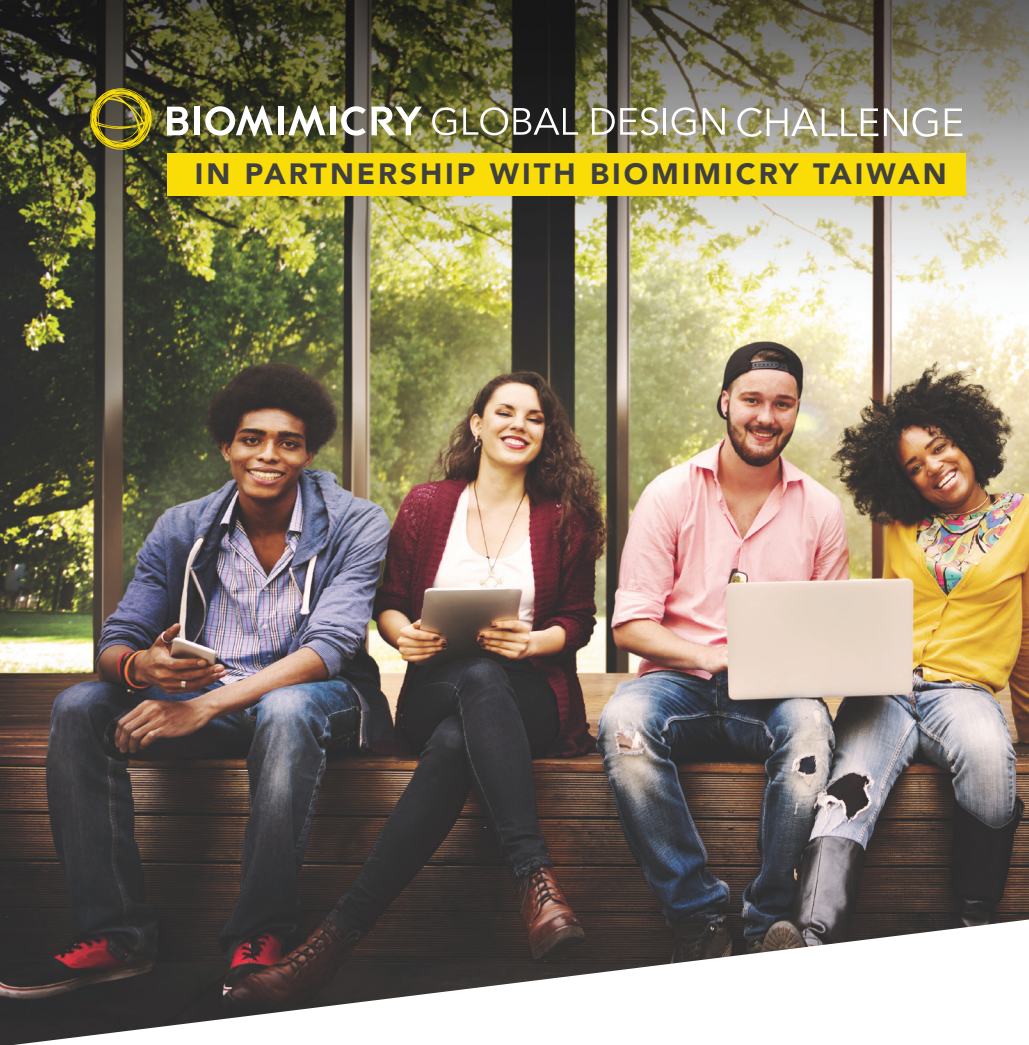


 **BIOMIMICRY GLOBAL DESIGN CHALLENGE**  
**IN PARTNERSHIP WITH BIOMIMICRY TAIWAN**



**Design<sup>o</sup>**  
**for People**  
**+ Planet**

**How many**  
**#degreesofchange** can  
**you make with nature**  
**as your mentor?**

**The Biomimicry Institute** and **Biomimicry Taiwan** invite students and professionals in Taiwan to participate in the **2020 Biomimicry Global Design Challenge: Taiwan Competition** to create viable solutions inspired by nature that address the **United Nations' Sustainable Development Goals (SDGs)**. The Challenge aims to mobilize individuals across the country to look to life on our planet as models, mentors and as sustainable forms of measurement to help create peace and prosperity for people and the planet, now and into the future.

People from all backgrounds are encouraged to learn, practice and create biomimetic strategies to solve the most pressing issues of our time.

Over billions of years, living organisms on our planet have learned to adapt, survive and thrive on Earth. We need to do the same. The impacts of our rapidly-changing climate are becoming more evident every day.

Inventors worldwide are using nature-inspired design to create solutions to address hunger, clean water, renewable energy, resilient infrastructure, deforestation, biodiversity loss, and threats to marine life.

**Applying nature's design blueprints to these challenges can help achieve the 2030 Agenda for Sustainable Development as agreed upon by leaders worldwide.**

Please contact [admin@biomimicrytaiwan.org](mailto:admin@biomimicrytaiwan.org) for more information.



**How does the Challenge work?**

All participants receive access to our collection of biomimicry resources, advice from experts, easy-to-follow guidelines, and the chance to be featured in high profile media. We are looking for both teams of entrepreneurs, as well as university students who want to participate in the Challenge as a learning opportunity. **Finalists from the Taiwan Competition will be offered a free submission to the Global Challenge where their submissions will be reviewed by judges worldwide.** Finalists are eligible to join the Biomimicry Launchpad, which provides teams with the knowledge, skills and connections to turn their project into a start-up.

**Who can participate?**

New biomimicry learners, whether university students or professionals, are invited to join our challenges. **All teams from Taiwan must enter the Taiwan competition prior to entering the Global Challenge.**

**How do I participate?**

Visit [biomimicrytaiwan.org](http://biomimicrytaiwan.org) for more information on the Taiwan Competition and visit [challenge.biomimicry.org](http://challenge.biomimicry.org) to sign up for the Biomimicry Global Design Challenge.

**How can I contribute?**

We need mentors, judges, media partners, promotional partners, and additional sponsors. If you'd like to help make our challenge a success, let's talk!

